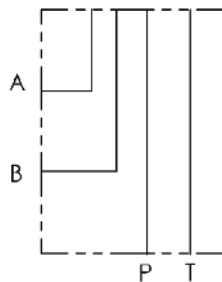
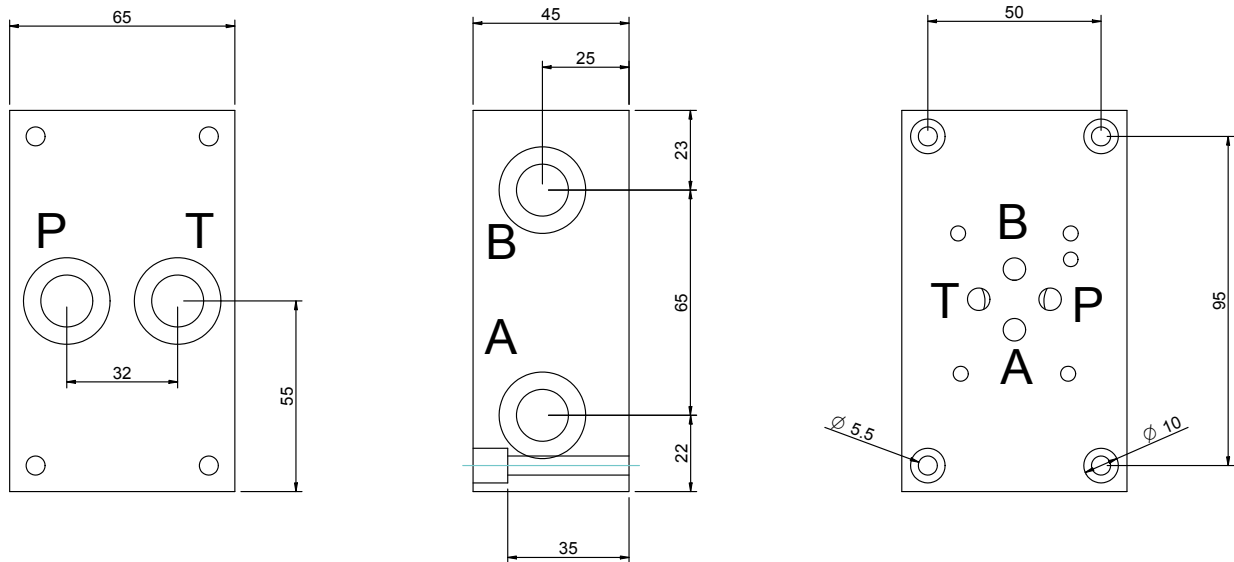


CETOP 3 - NG 06

BASE CON COLLEGAMENTO P - T POSTERIORI E A - B LATERALI
 SINGLE SUBPLATE ON REAR P - T AND ON SIDE A - B



Versione standard in alluminio
 Standard type with aluminium

Pressione massima di lavoro = 250 bar
 Max working pressure = 250 bar

Esempio codice di ordinazione - Ordering example

BSA 06 # PL

Base in alluminio
 Aluminium subplate

CETOP 3 - NG 06

A = (P - T - A - B) G1/4
 B = (P - T - A - B) G3/8

(P - T) posteriori e (A - B) laterali
 On rear (P - T) on side (A - B)